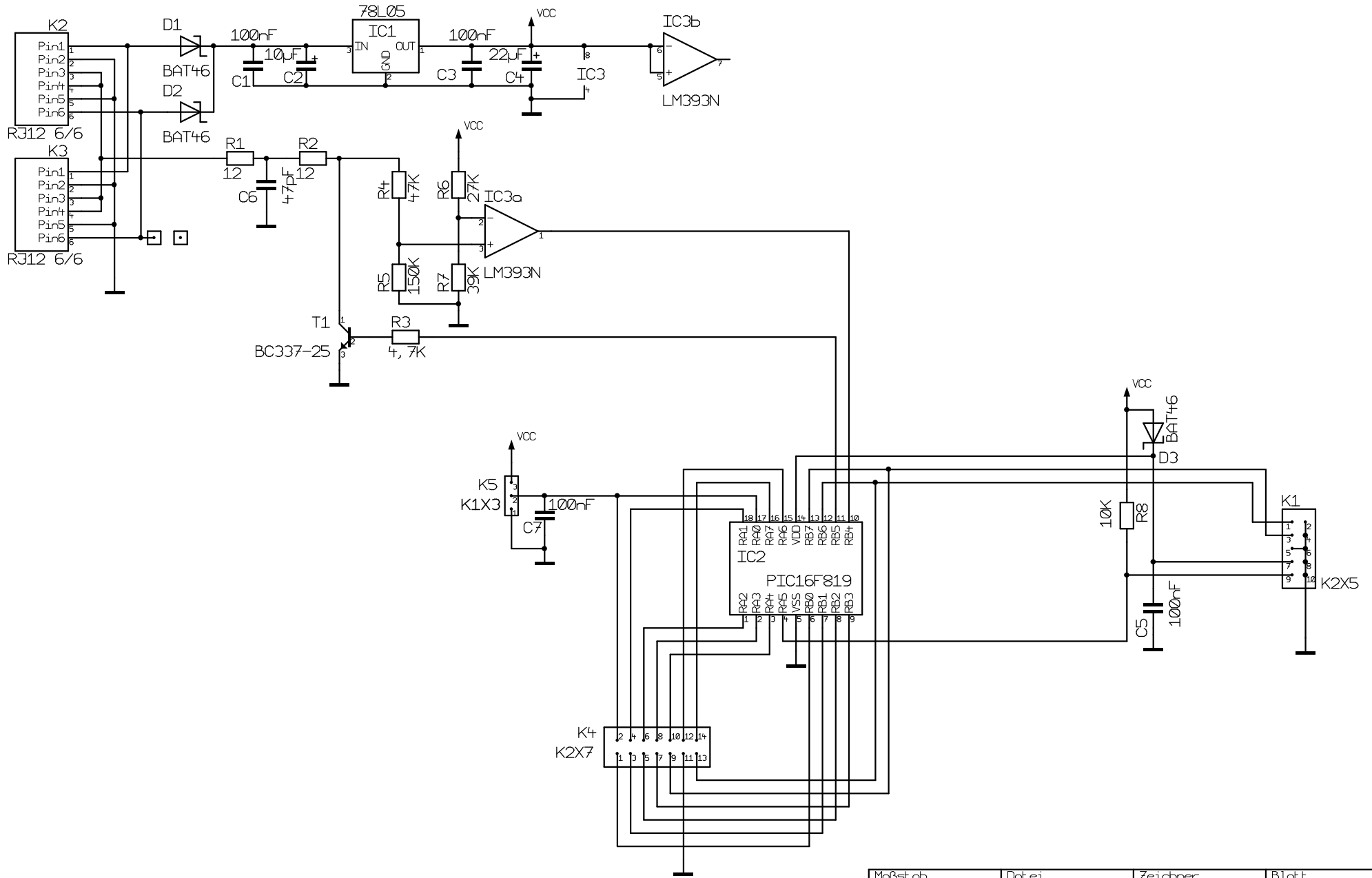
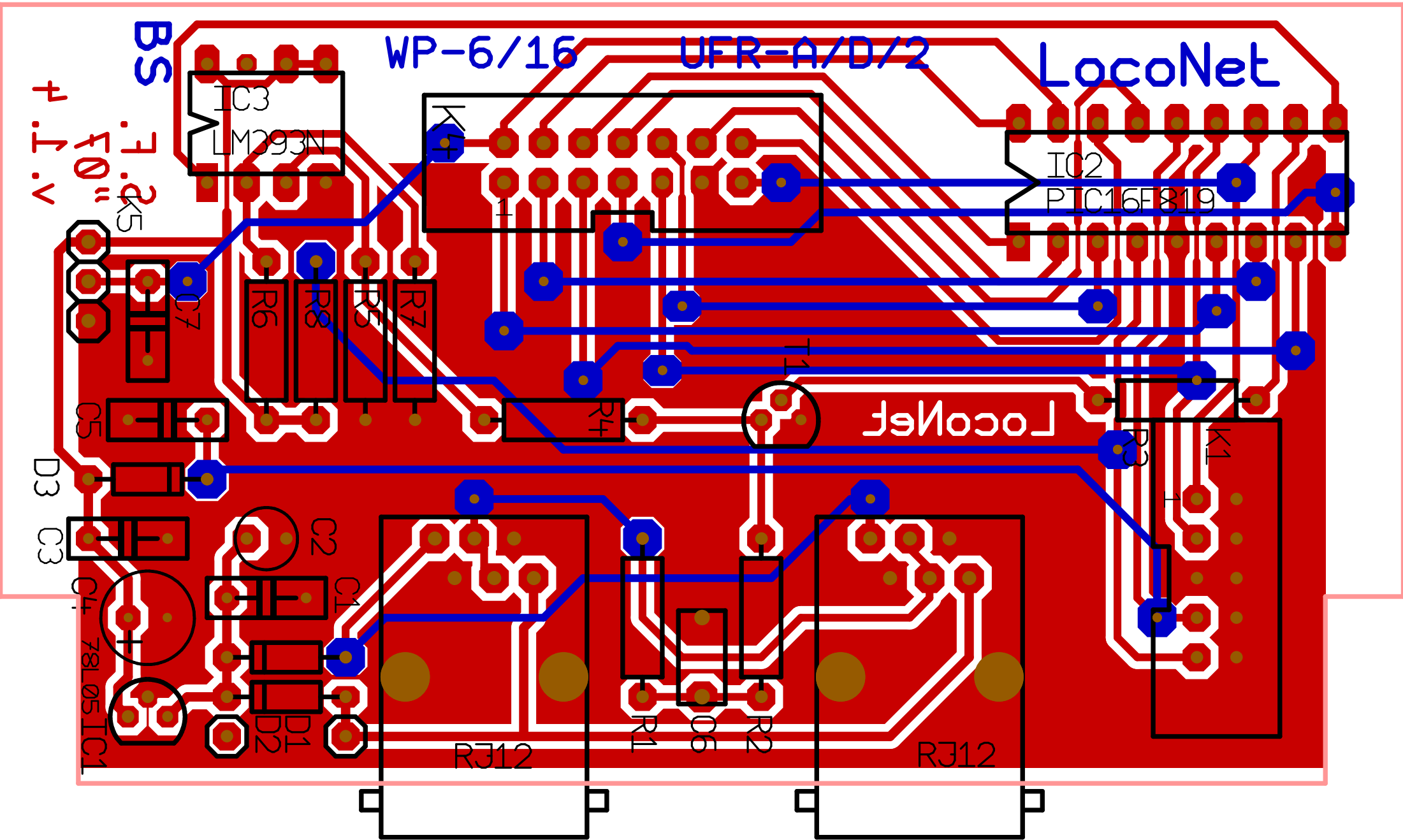


Maßstab 100,00%	Datei UFR-ADI.T3001	Zeichner Sebastian Foelz	Blatt
Anderung 09.08.07 07:21	Titel		
Ausgabe 13.08.07 18:17	UFR-Analog/Digital		
Firma	Projekt		



Maßstab 100,00%	Datei UFR-ADI. T3001	Zeichner Sebastian Foelz	Blatt
Anderung 09.08.07 07:21	Titel		
Ausgabe 13.08.07 18:18	UFR-Analog/Digital		
Firma	Projekt		

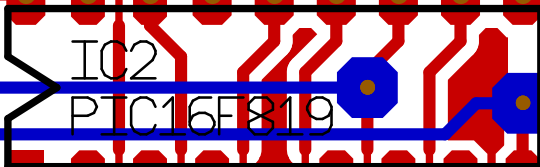
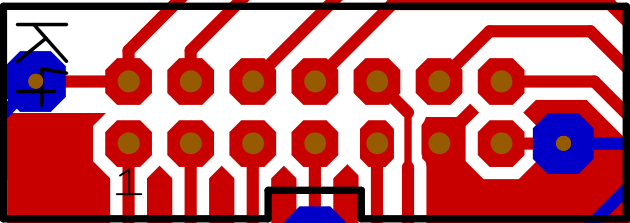
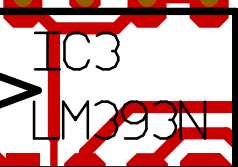


BS

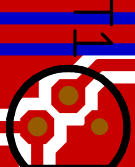
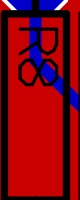
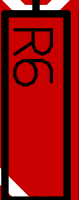
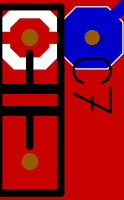
WP-6/16

UFR-A/D/2

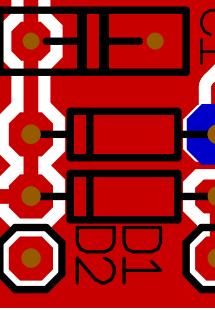
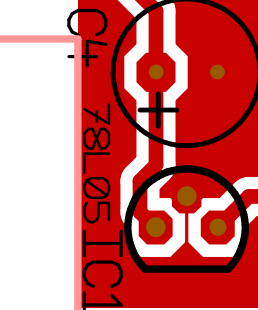
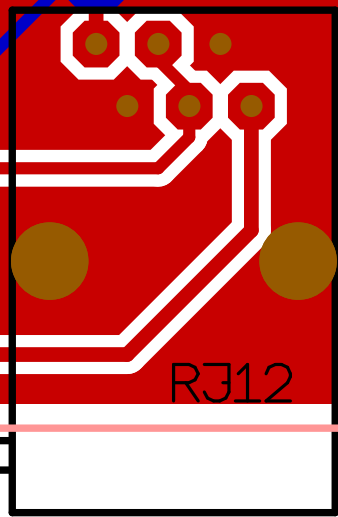
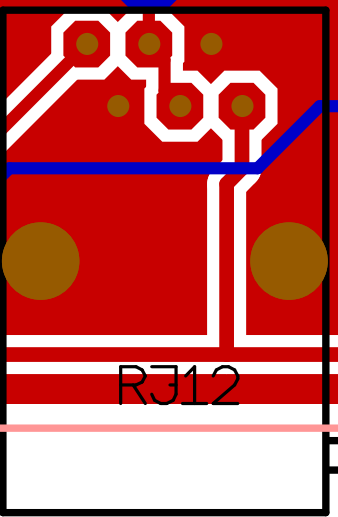
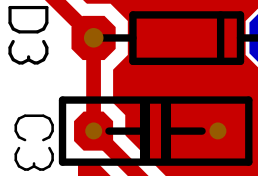
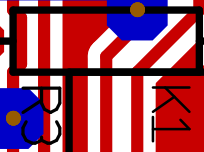
Loconet



4.1V
7.2V
70V



Loconet



IC1
IC2
IC3

RJ12

R1

D6

R2

RJ12

K1

R3

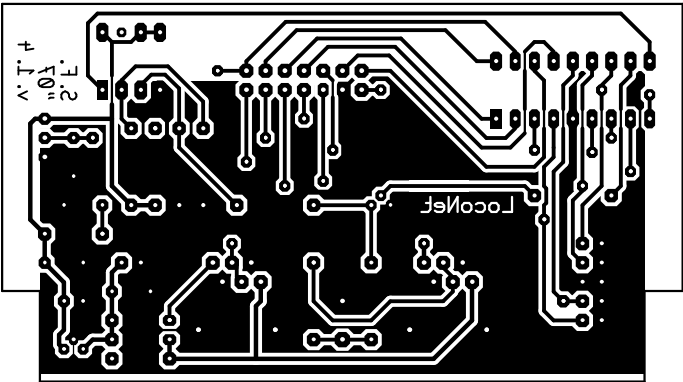
K4

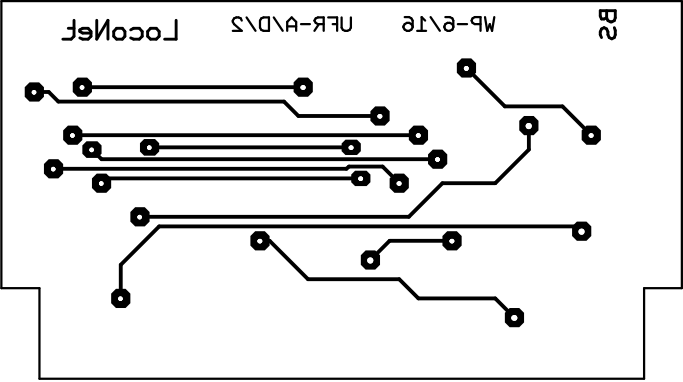
1

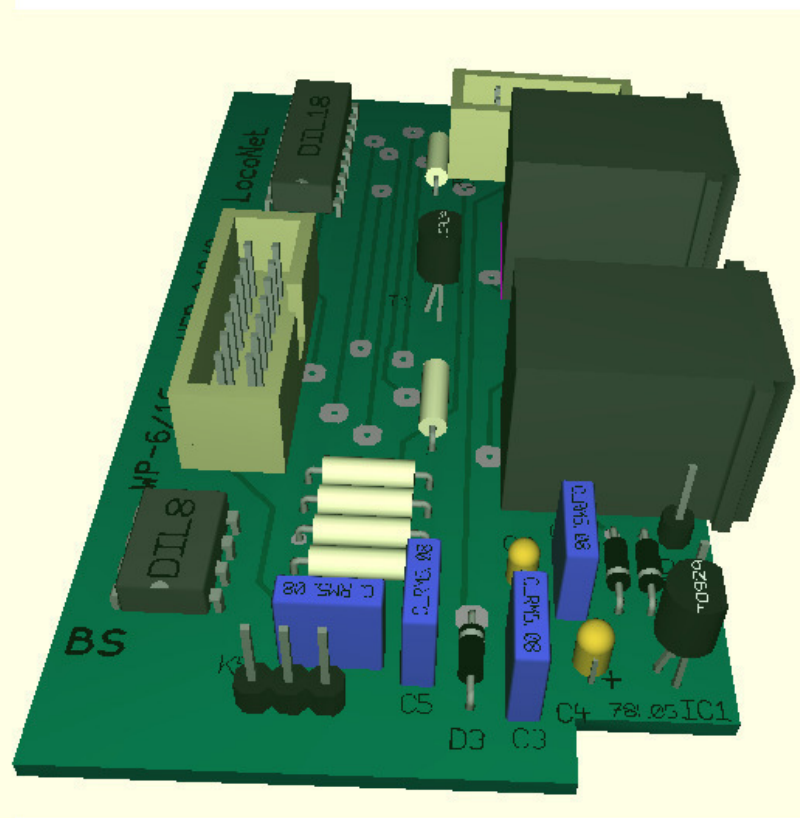
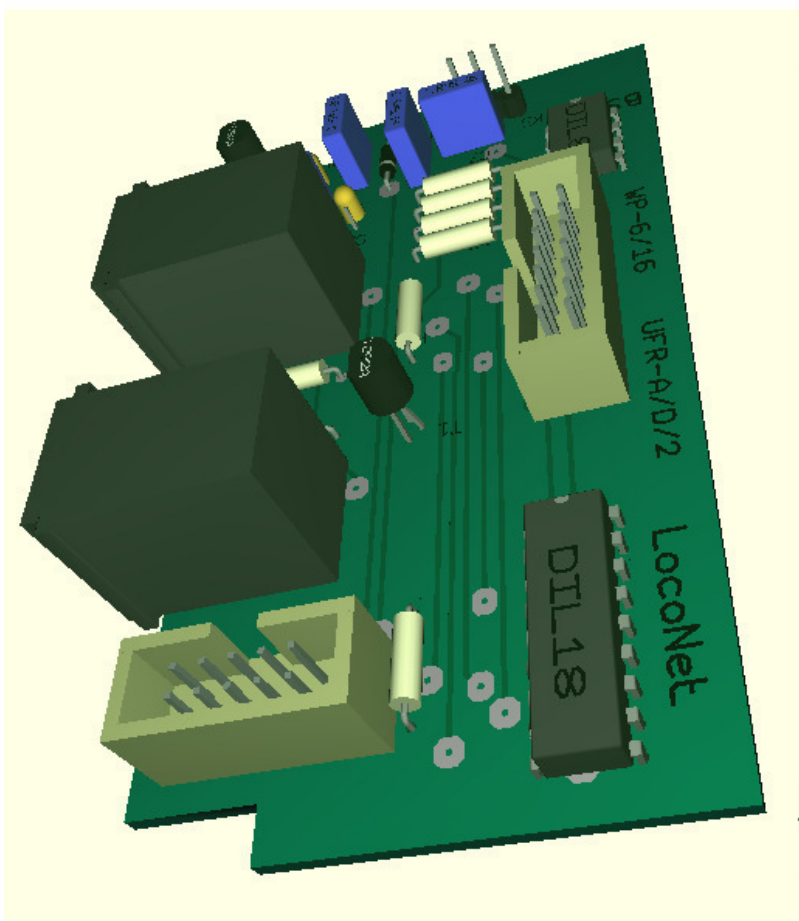
T1

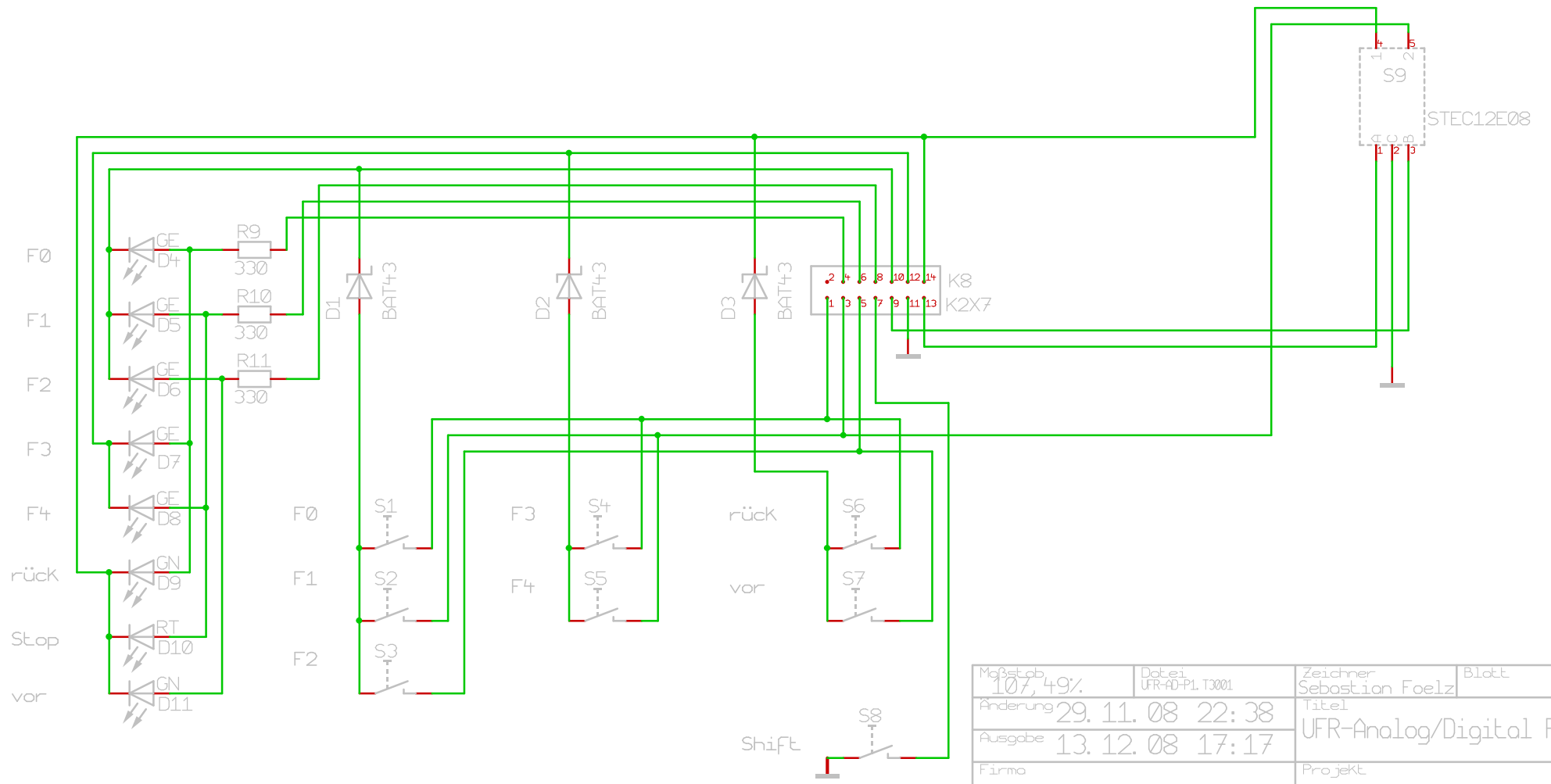
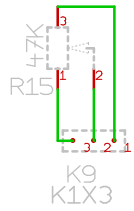
K1

K1

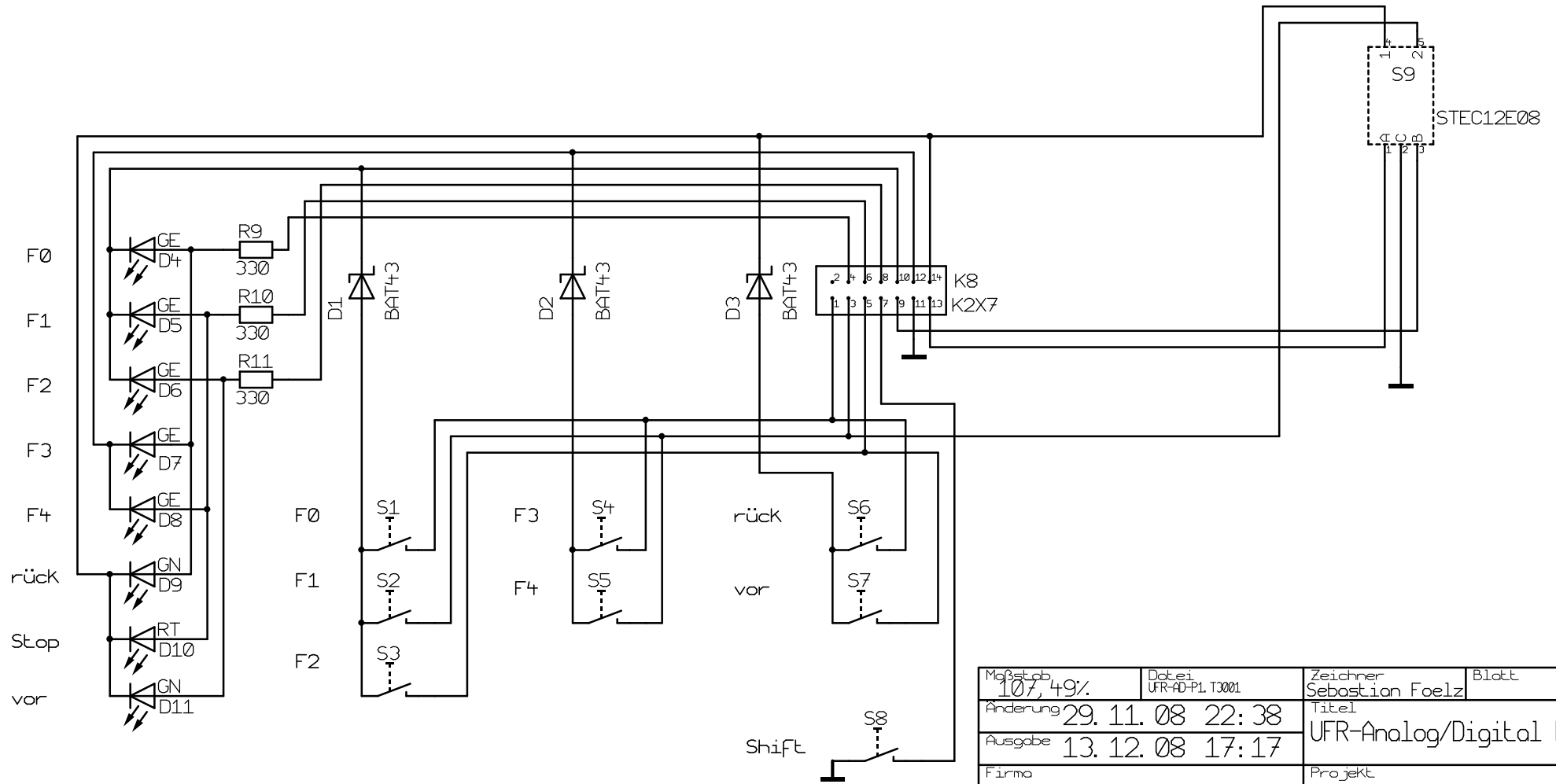
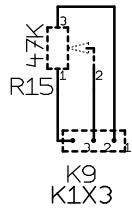




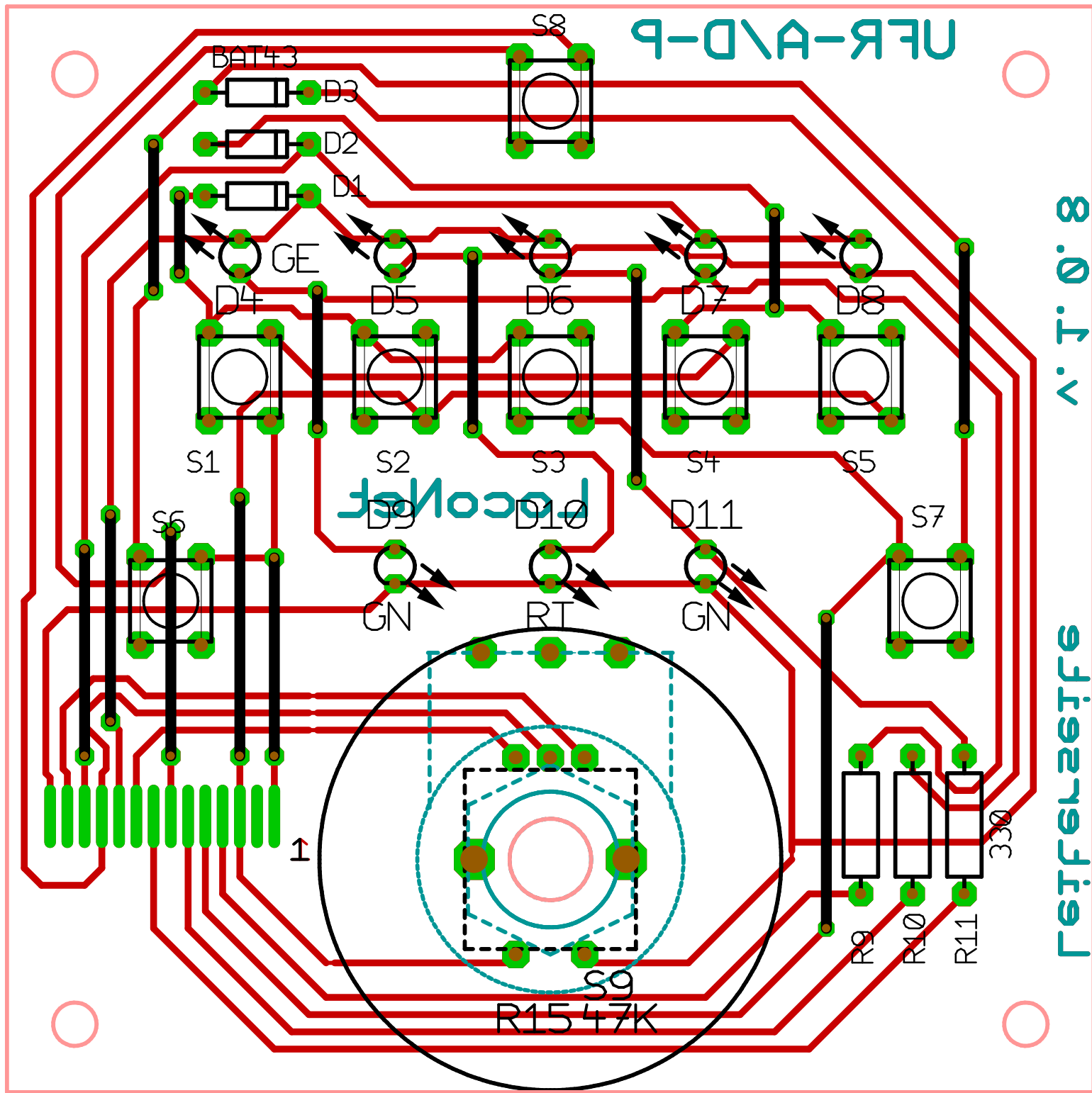




Maßstab 107,49%	Datei UFR-AD-PL.T3001	Zeichner Sebastian Foelz	Blatt
Anderung 29.11.08 22:38	Titel UFR-Analog/Digital Pult		
Ausgabe 13.12.08 17:17	Projekt		
Firma			



Maßstab 107,49%	Datei UFR-AD-PL.T3001	Zeichner Sebastian Foelz	Blatt
Anderung 29.11.08 22:38	Titel UFR-Analog/Digital Pult		
Ausgabe 13.12.08 17:17	Projekt		
Firma			



UFR-A\0-D-9

8 0 1 0 : 8

Geislerzeit

BAT43

S8

D3

D2

D1

GE

D4

D5

D6

D7

D8

S1

S2

S3

S4

S5

D9

D10

D11

S7

GN

RT

GN

S6

1

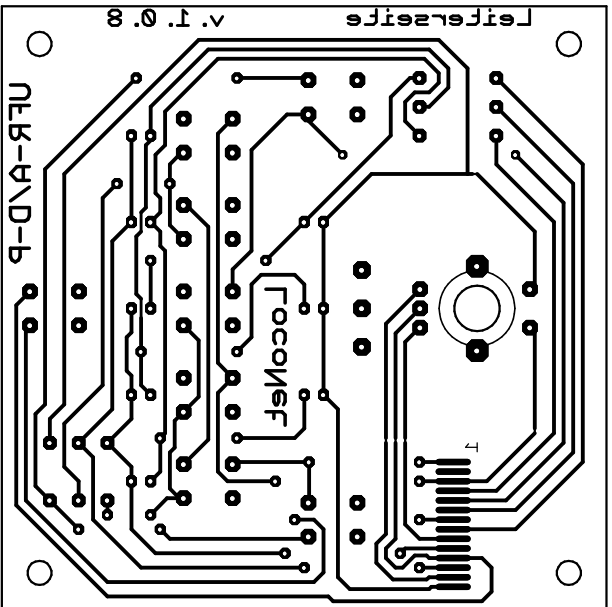
S9
R15 47K

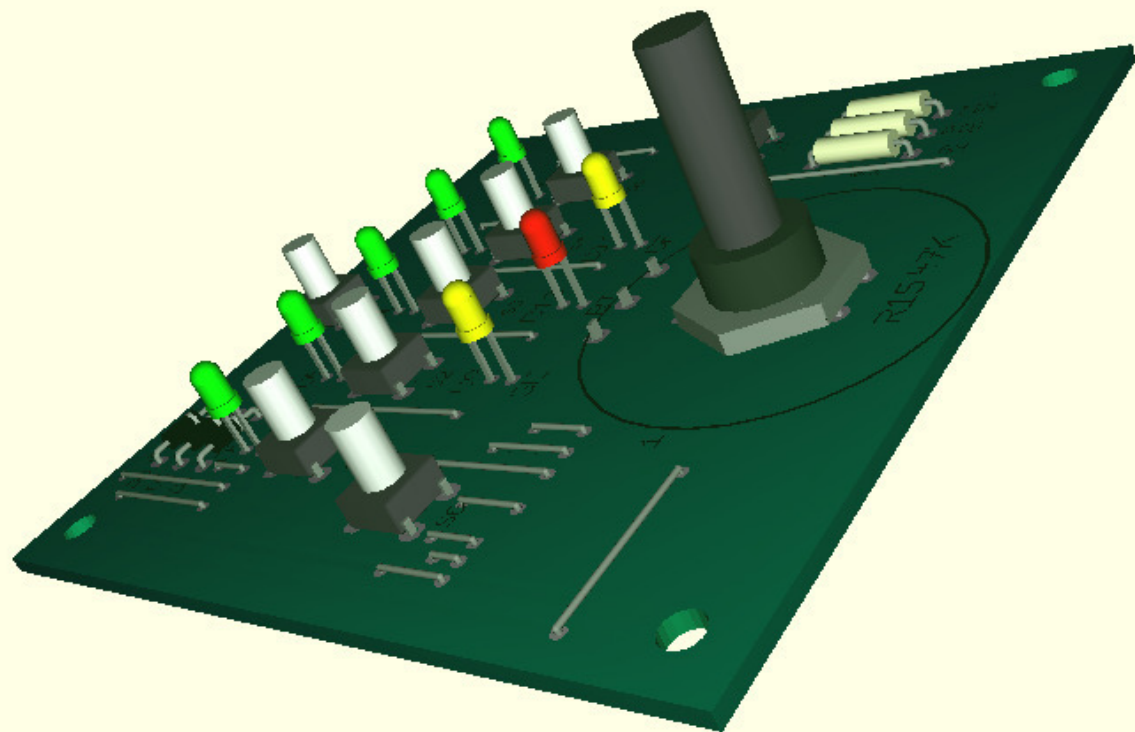
R9

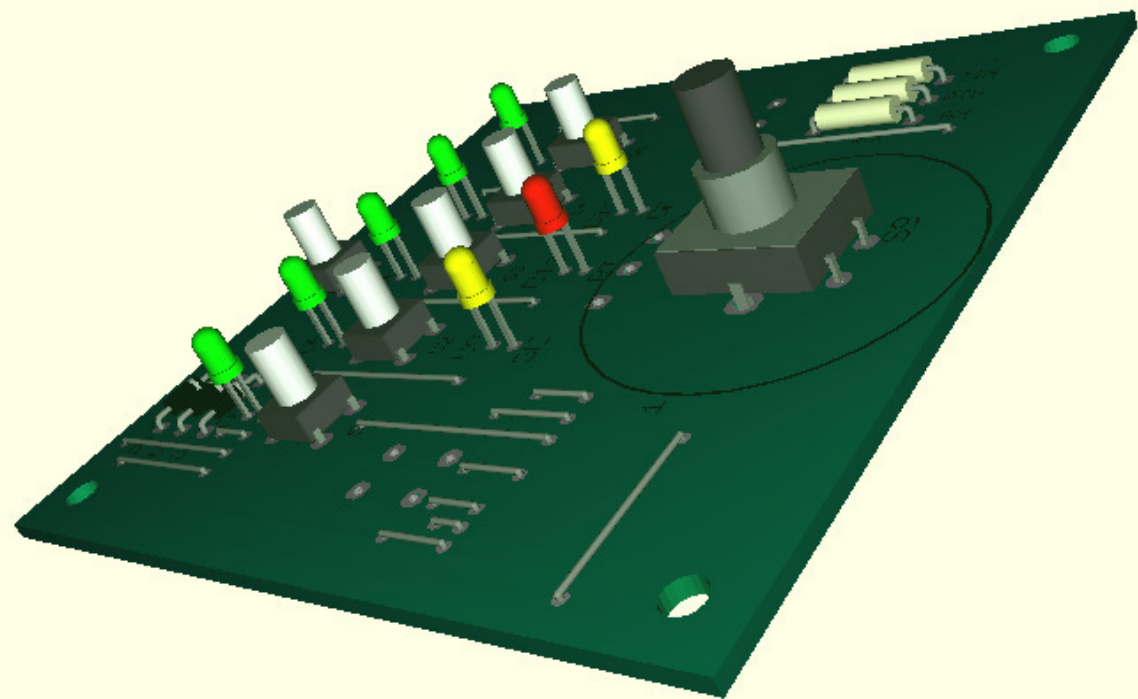
R10

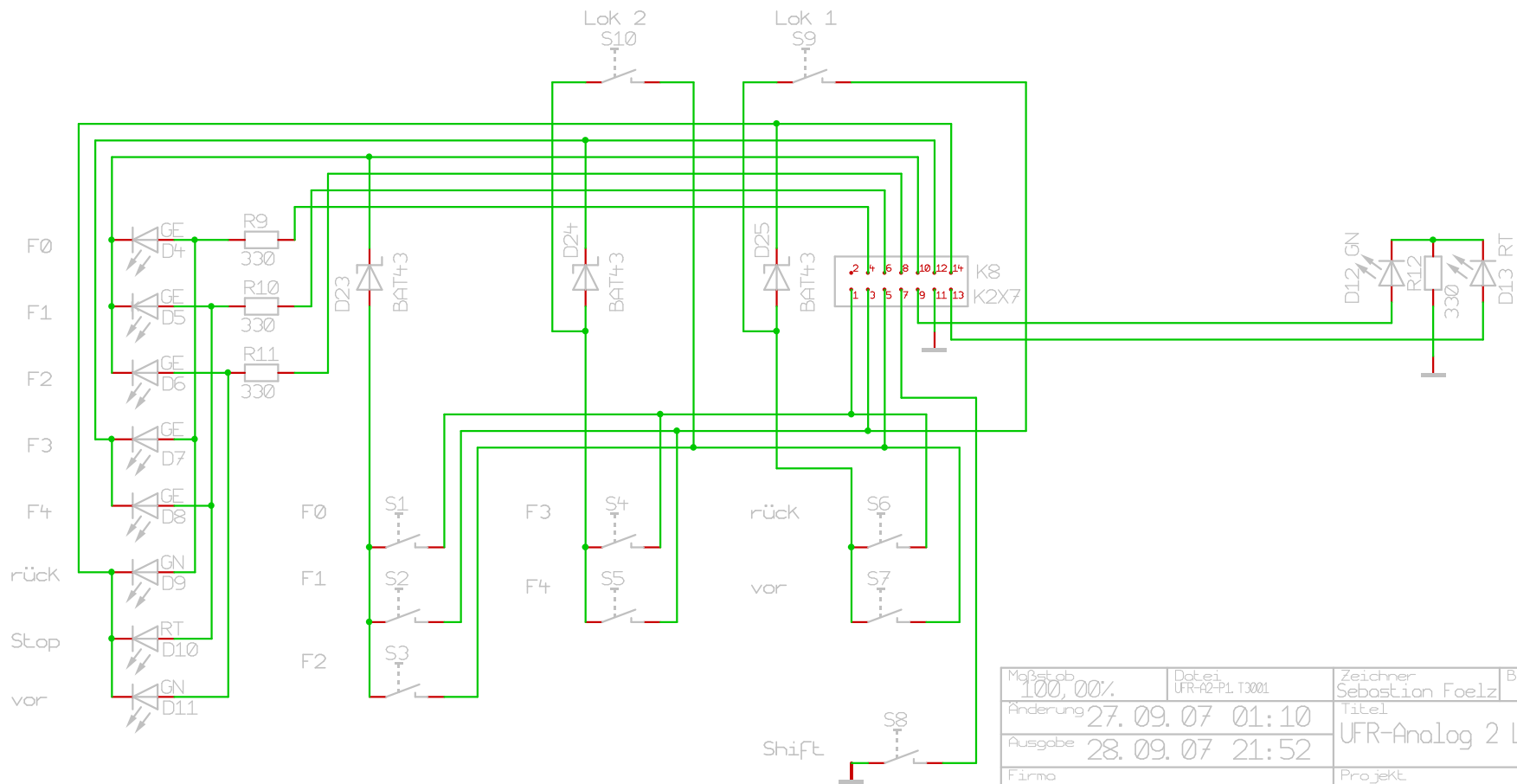
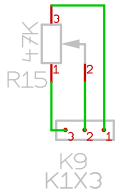
R11

330

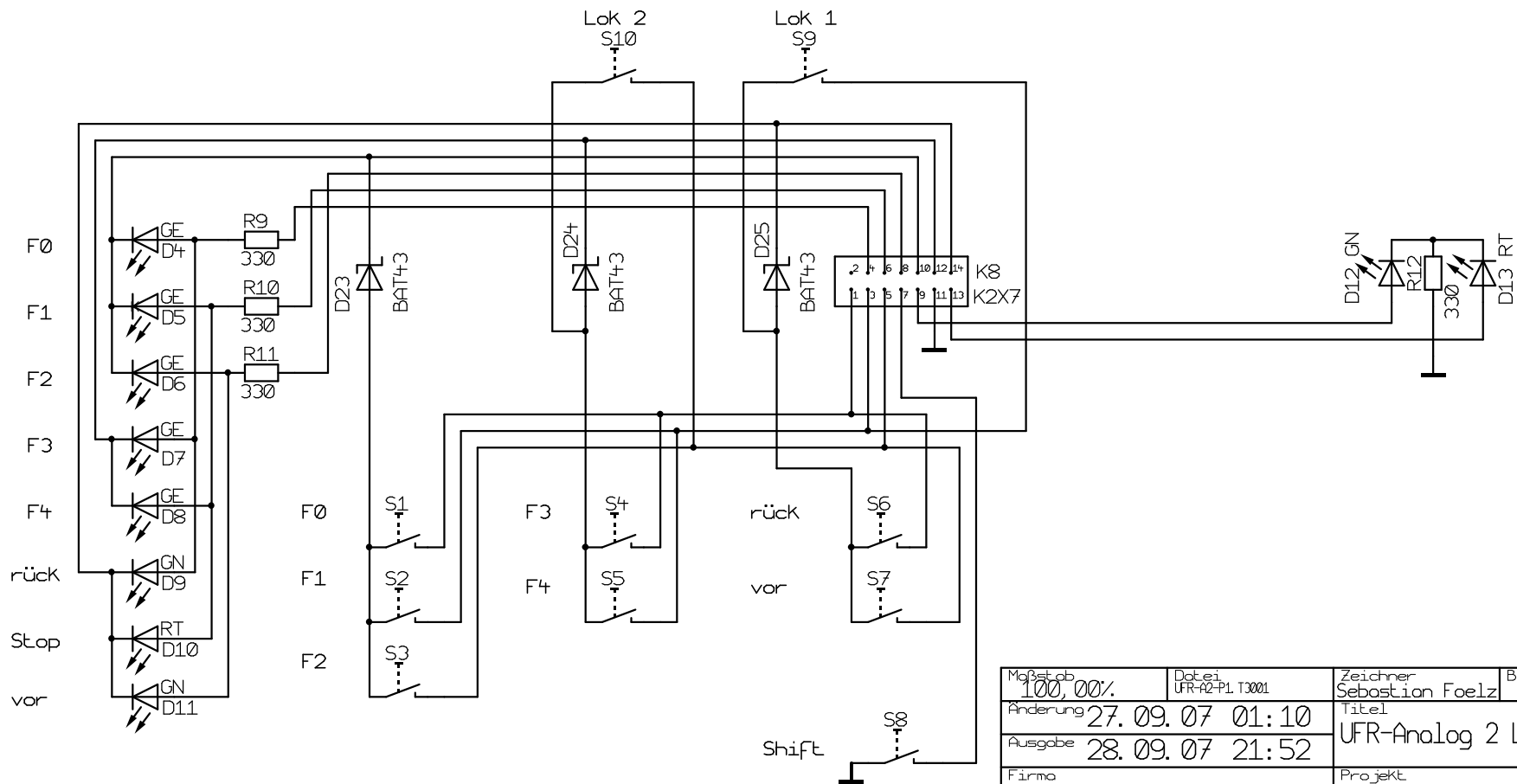
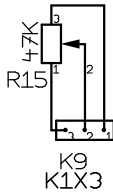








Maßstab 100,00%	Datei UFR-A2-P1.T3001	Zeichner Sebastian Foelz	Blatt
Anderung 27.09.07 01:10	Titel UFR-Analog 2 Locks		
Ausgabe 28.09.07 21:52	Firma		Projekt



Maßstab 100,00%	Datei UFR-A2-P1.T3001	Zeichner Sebastian Foelz	Blatt
Anderung 27.09.07 01:10	Titel UFR-Analog 2 Locks		
Ausgabe 28.09.07 21:52	Firma		Projekt

nicht bestücken!
29 und 210
D12, D13, R12,
Bei UFR-A

LocoNet
UFR-A-P
UFR-A2-P

Leiterseite
v. 1. 0. 3

Achtung Maße kontrollieren

